



SEMESTER 2/2017



NAME \_\_\_\_\_  
FACULTY \_\_\_\_\_  
ID. \_\_\_\_\_  
SECTION \_\_\_\_\_

**FOR** the second semester of the Academic Year 2017, all first year students are required to complete 5 learning activities and record their learning in the CULI Passport. Details are as follows:



**1.** To get **1 point**, please do at least 1 diagnostic test on website [www.culangtest.car.chula.ac.th/#modal](http://www.culangtest.car.chula.ac.th/#modal), using the same username and password given by the university.

**2.** To earn **4 more points**, please follow the instructions below.

**1 English Club activity** + 3 other activities of your choice in the SALC or the English Club for students in the following faculties:

**1 Conversation Hour** or **Let's Chat** or **Pronunciation Clinic** + 3 other activities of your choice in the SALC for students in the following faculties:

	FACULTY OF <b>ENGINEERING</b>	FACULTY OF <b>SCIENCE</b>	
	FACULTY OF <b>COMMERCE AND ACCOUNTANCY</b>	FACULTY OF <b>PHARMACEUTICAL SCIENCES</b>	
	FACULTY OF <b>POLITICAL SCIENCE</b>	FACULTY OF <b>EDUCATION</b>	
	FACULTY OF <b>ARCHITECTURE</b>	FACULTY OF <b>MEDICINE</b>	
	FACULTY OF <b>ALLIED HEALTH SCIENCES</b>	FACULTY OF <b>COMMUNICATION ARTS</b>	
	FACULTY OF <b>DENTISTRY</b>	FACULTY OF <b>LAW</b>	
	FACULTY OF <b>FINE AND APPLIED ARTS</b>	FACULTY OF <b>VETERINARY SCIENCE</b>	
	FACULTY OF <b>PSYCHOLOGY</b>	FACULTY OF <b>ECONOMICS</b>	
	SCHOOL OF <b>AGRICULTURAL RESOURCES</b>	FACULTY OF <b>SPORTS SCIENCE</b>	

**Remarks:** **2 activities** are to be completed before the mid-term exam week

**1**

and the **other 3** are to be completed before the final exam weeks.



*Enjoy our wide range of learning materials and activities*

As one of the earliest self-access centers in Thailand, established in 1990, the CULI Self-Access Learning Center (SALC) provides opportunities for students to continue improving their English language skills with full control over their own learning journey.

Over the past 27 years since its founding, the SALC has committed itself to streamlining services, providing a broad spectrum of learning materials and activities for self-directed learning to develop skills in listening, speaking, reading, writing, grammar, vocabulary, and pronunciation in a relaxed and motivating atmosphere conducive to learning. Examples include:



- Over 8,000 books, magazines, novels, comics, etc.
- World-class language learning software such as English Discoveries and English 20 Interactive
- National Geographic Footprint Reading Library and DVD
- A large selection of DVD movies/music
- A number of board games to promote interest in English
- Specific learning activities e.g. Conversation Hour, Let's Chat, Writing Clinic, Pronunciation Clinic and more



The expansion of resources available in the SALC has resulted in an exponential increase in SALC attendance by students as well as visitors from numerous educational institutions across the nation each year. This attests to the success of the SALC in achieving its mission to enable students to further improve their English skills at their own pace.

The CULI Self-Access Learning Center pledges our commitment to developing services in response to the rapidly-changing world of technology to equip students with excellent English language competency, empowering them to compete in the international arena from within Chulalongkorn University as it enters its second century as the preeminent institution of higher learning in Thailand.

# ACTIVITIES

## Conversation Hour

Practicing English conversations in groups of about 15 students with CULI native speakers.



## Let's Chat

Speaking English with friendly international program students of Chulalongkorn University.



## Pronunciation Clinic

Practicing English with CULI teachers.



## Writing Clinic

Improving writing skills with CULI teachers.



## English Computer Programs

Tell Me More, English Discoveries, and English 20 Interactive.



## Learning Advisor

Learning about English language usage with CULI teachers or teaching assistants.



## Teaching Assistant





# Self-Access Learning Center (SALC)

**Instructions:** Use this log to keep track of what you have learned in SALC.

**Materials/Activities** (Please specify e.g. books, CDs, English Discoveries, Conversation Hour, etc.)



\_\_\_\_\_

What did you do ? Please be specific.

\_\_\_\_\_  
\_\_\_\_\_  
\_\_\_\_\_

How did you feel / What did you think about it?

\_\_\_\_\_  
\_\_\_\_\_  
\_\_\_\_\_

What did you learn? (Other comments or suggestions ?)

\_\_\_\_\_  
\_\_\_\_\_  
\_\_\_\_\_



**Official** \_\_\_\_\_



# Self-Access Learning Center (SALC)

**Instructions:** Use this log to keep track of what you have learned in SALC.

**Materials/Activities** (Please specify e.g. books, CDs, English Discoveries, Conversation Hour, etc.)



\_\_\_\_\_

What did you do ? Please be specific.

\_\_\_\_\_  
\_\_\_\_\_  
\_\_\_\_\_

How did you feel / What did you think about it?

\_\_\_\_\_  
\_\_\_\_\_  
\_\_\_\_\_

What did you learn? (Other comments or suggestions ?)

\_\_\_\_\_  
\_\_\_\_\_  
\_\_\_\_\_



**Official** \_\_\_\_\_



# Self-Access Learning Center (SALC)

**Instructions:** Use this log to keep track of what you have learned in SALC.

**Materials/Activities** (Please specify e.g. books, CDs, English Discoveries, Conversation Hour, etc.)



\_\_\_\_\_

What did you do ? Please be specific.

\_\_\_\_\_  
\_\_\_\_\_  
\_\_\_\_\_  
\_\_\_\_\_

How did you feel / What did you think about it?

\_\_\_\_\_  
\_\_\_\_\_  
\_\_\_\_\_  
\_\_\_\_\_

What did you learn? (Other comments or suggestions ?)

\_\_\_\_\_  
\_\_\_\_\_  
\_\_\_\_\_  
\_\_\_\_\_



(Stamp here)

**Official** \_\_\_\_\_





# Self-Access Learning Center (SALC)

**Instructions:** Use this log to keep track of what you have learned in SALC.

**Materials/Activities** (Please specify e.g. books, CDs, English Discoveries, Conversation Hour, etc.)



\_\_\_\_\_

What did you do ? Please be specific.

\_\_\_\_\_  
\_\_\_\_\_  
\_\_\_\_\_  
\_\_\_\_\_

How did you feel / What did you think about it?

\_\_\_\_\_  
\_\_\_\_\_  
\_\_\_\_\_  
\_\_\_\_\_

What did you learn? (Other comments or suggestions ?)

\_\_\_\_\_  
\_\_\_\_\_  
\_\_\_\_\_  
\_\_\_\_\_



**Official** \_\_\_\_\_



# ACTIVITIES

**Operated** by the Extracurricular Activity Unit of CULI, the CULI English Club is designed to provide language-rich environments for students to use English purposefully outside the classroom. A team of dedicated teachers from the Extracurricular Unit are tasked with organizing a wide array of activities to engage students in the use of English and a chance to interact in English with their peers from different faculties. The activities also introduce students to new ideas or concepts to broaden their horizons while enhancing their English skills and fluency. Major activities carried out by the CULI English Club include:

*In the News*

*Career Talk*

*Creative Writing*

*Drama*



## Short Film



This activity aims to help students learn English through different popular English songs with an emphasis on practicing listening skill and understanding the songs' meanings.

## Music and Lyrics

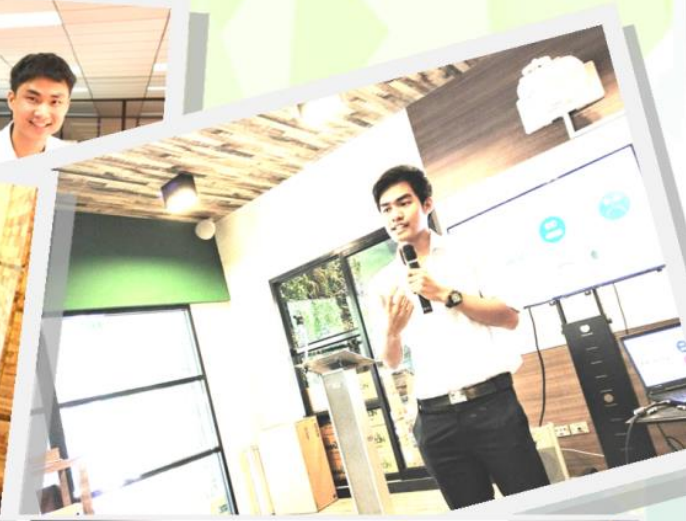
## TED Talks



Students are provided with opportunities to practice English listening and speaking skills as well as share ideas with others by listening to explorations of thought-provoking questions. They are at the same time actively engaged in observing and learning effective presentation techniques from professional presenters.

## Funnetics

This activity aims to help students learn how to pronounce English words correctly by focusing on difficult English consonant sounds.



CU Gavel Club is an affiliate of Toastmasters International, the leading non-profit organization in helping its members developing public speaking and leadership skills. Run by Extracurricular Activity Unit of Chulalongkorn University Language Institute (CULI), the Club has the great ambition to foster the ability of Chulalongkorn University students to communicate in public.



Students will learn some tips and techniques on how to give an effective presentation, create a professional audio-visual aid, and give a presentation.



Register online at [www.culi.chula.ac.th/engclub/](http://www.culi.chula.ac.th/engclub/)

For more information, contact [cuengclub@gmail.com](mailto:cuengclub@gmail.com).

Tel. 02-218-6111



# English Club

**Instructions:** Record the details of your participation in the space below.

Activity / Workshop



What did you do ? Please be specific.

---

---

---

---

How did you feel / What did you think about it ?

---

---

---

---

What did you learn? (Other comments or suggestions ?)

---

---

---

---



**Official** \_\_\_\_\_



# English Club

**Instructions:** Record the details of your participation in the space below.

Activity / Workshop



What did you do ? Please be specific.

---

---

---

How did you feel / What did you think about it ?

---

---

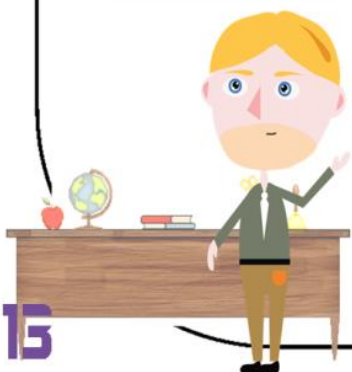
---

What did you learn? (Other comments or suggestions ?)

---

---

---



**Official** \_\_\_\_\_



# CULi Online Diagnostic Test

## CULi Diagnostic Test

แบบทดสอบภาษาอังกฤษ

Developed by Chulalongkorn University Language Institute (CULI), CULI Diagnostic Test is designed to help students identify problems they have with English. Consisting of 13 tests, each with 50 multiple choice questions, CULI Diagnostic Test encompasses the areas of grammar, listening, reading, and vocabulary. Now click on the area that you would like to explore.



## CULi Diagnostic Test

แบบทดสอบภาษาอังกฤษ

Verb Tenses : 1 / 50

Choose the best answer.

The koala \_\_\_\_\_ almost entirely on eucalyptus leaves, which are low in protein and contain compounds toxic to most species.

- A. lives
- B. lived
- C. is living
- D. will live

Answer Keys

คำตอบคือ A. lives  
ใช้ present simple tense เนื่องจากเป็นเรื่องเท็จจริง (fact)

Good job!



Next

Version 2.5

## How to use CULi Diagnostic Test

1. Log in at <https://culangtest.car.chula.ac.th/#modal>.
2. Log in using your CUNET username and password.
3. Click CULi Diagnostic Test icon.
4. Select any of the 13 Diagnostic Tests you wish to take.
5. For each question, if you are correct, an explanation will be given. If you are incorrect twice, the answer and explanation will be given.
6. All the questions in each test must be completed in one sitting to get the test result, which can be **printed out or saved as a PDF file**. The system does NOT allow you to stop the test in progress and resume the test at later time.
7. For a mobile device, you can print the result page by **taking a screenshot of the page** and send it to your email address or Cloud Drive to print out the page on a PC.
8. **Log in every time** you wish to launch a new set of tests.



**\*\* Remarks:** This test is best conducted on PC, Macintosh, notebook or MacBook. For smartphone or tablet devices, it is recommended that users download the free Puffin browser from



or





— CULI —  
CHULALONGKORN UNIVERSITY  
LANGUAGE  
INSTITUTE



[WWW.CULI.CHULA.AC.TH](http://WWW.CULI.CHULA.AC.TH)